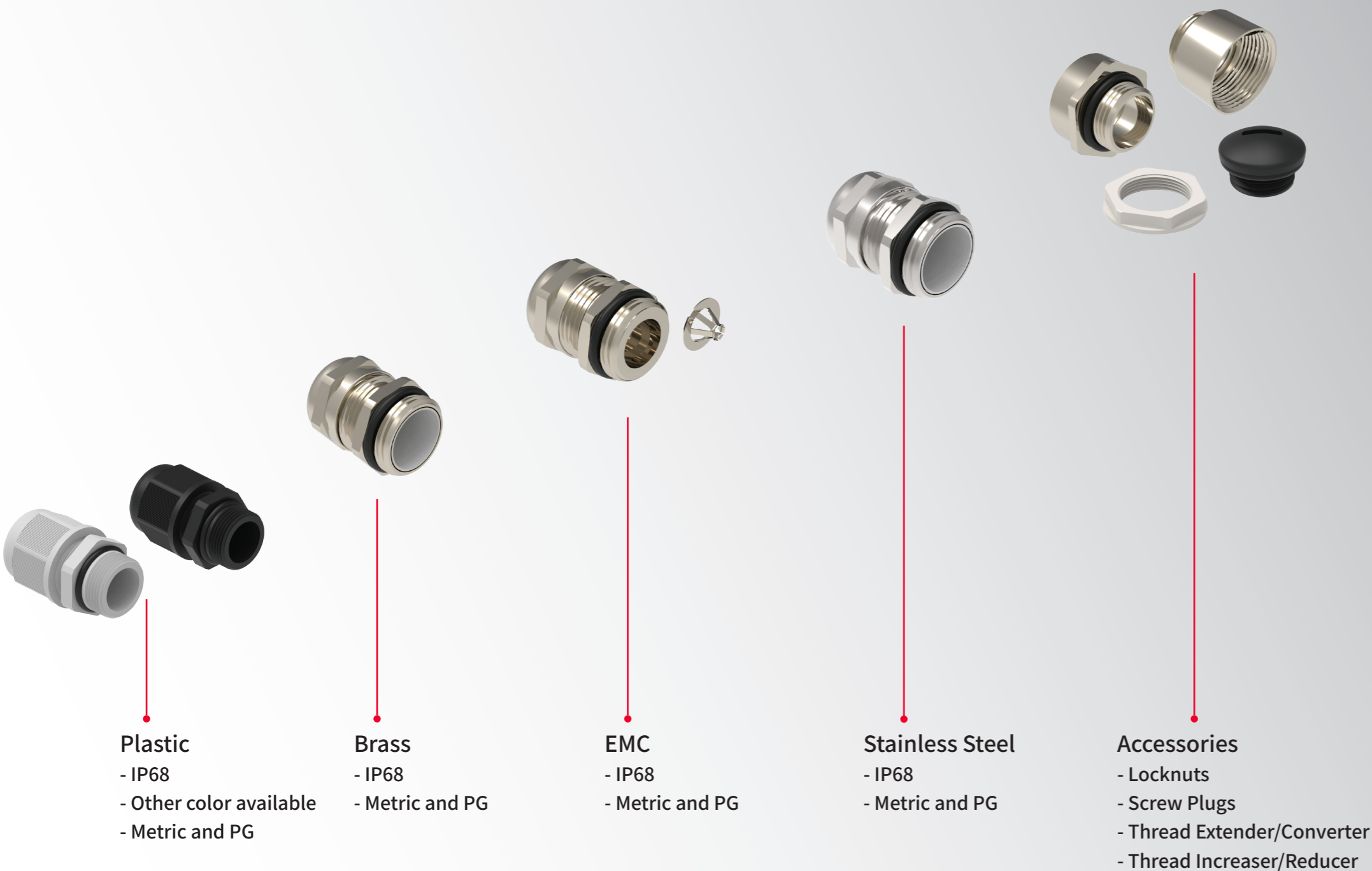













Cable Glands

As your technical partner, we support our customers in advice on technical solutions and the design of tailor-made products. By participating customer's needs. We think from customers' perspective and do our utmost to solve their problems with our professional knowledge and skills.

- InKonn(Suzhou) Electric Technology Co., Ltd.

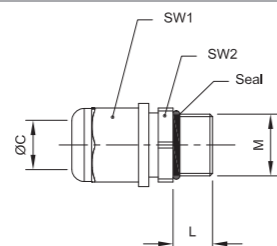


CONTENTS

Overview			01
Preface			01
<hr/>			
Productlist			03
Cable Glands, IP68	Polyamide		03
	Brass		05
	Brass-EMC		07
Accessories	Locknuts		09
	Screw Caps		13
	Thread Extender		17
	Thread Increaser		19
	Thread Reducer		21
	Thread Converter		25

Technical characteristics

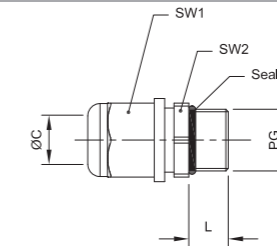
- Material: Nylon
- Material(Cable seal): NBR
- Material(O-ring): NBR
- Limiting temperature: -40...+100 °C
- Degree of protection(IP):IP68



Thread	Cable range(mm)	Dimension(mm)			Order Information		
		L	SW1	SW2	Black	Light Grey	
Metric	ØC						
M12 x 1.5	3 ... 6.5	9.0	15.5	15.5	10 97 000 1401	10 97 000 1201	
M12 x 1.5	4 ... 8	9.0	19.0	19.0	10 97 000 1402	10 97 000 1202	
M16 x 1.5	4 ... 8	9.0	19.0	19.0	10 97 000 1403	10 97 000 1203	
M16 x 1.5	6 ... 10	10.0	22.0	22.0	10 97 000 1405	10 97 000 1205	
M20 x 1.5	5 ... 9	10.0	24.0	24.0	10 97 000 1407	10 97 000 1207	
M20 x 1.5	6 ... 12	10.0	24.0	24.0	10 97 000 1406	10 97 000 1206	
M20 x 1.5	8 ... 14	11.0	27.0	27.0	10 97 000 1408	10 97 000 1208	
M25 x 1.5	8 ... 14	11.0	27.0	27.0	10 97 000 1410	10 97 000 1210	
M25 x 1.5	13 ... 18	12.0	33.0	33.0	10 97 000 1409	10 97 000 1209	
M32 x 1.5	14 ... 22	15.0	42.0	42.0	10 97 000 1412	10 97 000 1212	
M32 x 1.5	18 ... 25	15.0	42.0	42.0	10 97 000 1411	10 97 000 1211	
M40 x 1.5	22 ... 32	15.0	52.0	52.0	10 97 000 1413	10 97 000 1213	
M50 x 1.5	31 ... 41	16.0	62.0	62.0	10 97 000 1415	10 97 000 1215	
M63 x 1.5	35 ... 45	18.0	76.0	76.0	10 97 000 1417	10 97 000 1217	

Technical characteristics

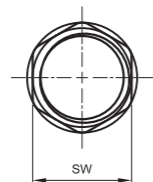
- Material: Nylon
- Material(Cable seal): NBR
- Material(O-ring): NBR
- Limiting temperature: -40...+100 °C
- Degree of protection(IP):IP68



Thread	Cable range(mm)	Dimension(mm)			Order Information		
		L	SW1	SW2	Black	Light Grey	
PG	ØC						
PG7	3 ... 6.5	9.0	16.0	16.0	10 97 800 1401	10 97 800 1201	
PG7	4 ... 8	9.0	19.0	19.0	10 97 800 1402	10 97 800 1202	
PG9	4 ... 8	9.0	19.0	19.0	10 97 800 1403	10 97 800 1203	
PG11	6 ... 10	10.0	22.0	22.0	10 97 800 1405	10 97 800 1205	
PG13.5	7 ... 12.5	10.5	24.0	24.0	10 97 800 1407	10 97 800 1207	
PG16	8 ... 14	11.0	27.0	27.0	10 97 800 1409	10 97 800 1209	
PG21	13 ... 18	12.5	33.0	33.0	10 97 800 1411	10 97 800 1211	
PG29	18 ... 25	12.5	42.0	42.0	10 97 800 1413	10 97 800 1213	
PG36	22 ... 32	15.0	52.0	52.0	10 97 800 1415	10 97 800 1215	
PG42	31 ... 41	16.0	62.0	62.0	10 97 800 1417	10 97 800 1217	
PG48	35 ... 45	18.0	65.0	65.0	10 97 800 1419	10 97 800 1219	

Technical characteristics

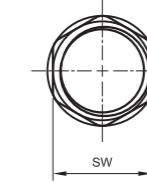
- Material: Nylon
- Limiting temperature: -40...+100 °C



Thread	Cable range(mm)	Dimension(mm)	Order Information		
			Black	Light Grey	
Metric		SW			
M12 x 1.5		17.5	10 97 000 1601	10 97 000 2001	
M16 x 1.5		22.0	10 97 000 1602	10 97 000 2002	
M20 x 1.5		26.4	10 97 000 1604	10 97 000 2004	
M25 x 1.5		36.0	10 97 000 1607	10 97 000 2007	
M32 x 1.5		38.4	10 97 000 1608	10 97 000 2008	
M40 x 1.5		49.5	10 97 000 1609	10 97 000 2009	
M50 x 1.5		59.5	10 97 000 1610	10 97 000 2010	
M63 x 1.5		72.4	10 97 000 1611	10 97 000 2011	

Technical characteristics

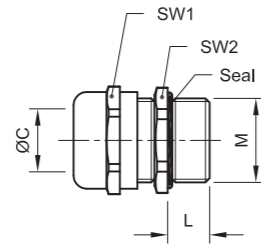
- Material: Nylon
- Limiting temperature: -40...+100 °C



Thread	Cable range(mm)	Dimension(mm)	Order Information		
			Black	Light Grey	
PG		SW			
PG7		17.5	10 97 800 1601	10 97 800 2001	
PG9		22.0	10 97 800 1602	10 97 800 2002	
PG11		23.5	10 97 800 1603	10 97 800 2003	
PG13.5		26.5	10 97 800 1604	10 97 800 2004	
PG16		29.5	10 97 800 1605	10 97 800 2005	
PG21		35.5	10 97 800 1606	10 97 800 2006	
PG29		45.5	10 97 800 1607	10 97 800 2007	
PG36		57.5	10 97 800 1608	10 97 800 2008	
PG42		64.0	10 97 800 1609	10 97 800 2009	
PG48		69.0	10 97 800 1610	10 97 800 2010	

Technical characteristics

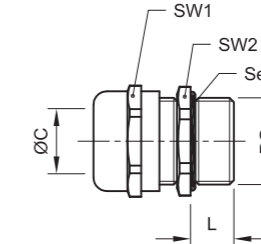
- Material: Brass, nickel plated
- Material(Cable seal): NBR
- Material(O-ring): NBR
- Limiting temperature: -40 ... +120 °C
- Degree of protection(IP): IP68



Thread	Cable range(mm)	Dimension(mm)			Order Information	
Metric	ØC	L	SW1	SW2	Part No.	Type Name
M12 x 1.5	3 ... 6.5	5.8	14.0	14.0	10 97 000 1101	KVSM-M12(D3-6.5)
M16 x 1.5	4 ... 8	6.7	17.0	17.0	10 97 000 1103	KVSM-M16(D4-8)
M16 x 1.5	5 ... 10	6.0	20.0	20.0	10 97 000 1105	KVSM-M16(D5-10)
M20 x 1.5	5 ... 10	7.8	22.0	22.0	10 97 000 1107	KVSM-M20(D5-10)
M20 x 1.5	6 ... 12	7.8	22.0	22.0	10 97 000 1106	KVSM-M20(D6-12)
M20 x 1.5	8 ... 14	7.8	24.0	24.0	10 97 000 1108	KVSM-M20(8-14)
M25 x 1.5	10 ... 16	7.7	27.0	27.0	10 97 000 1110	KVSM-M25(D10-16)
M25 x 1.5	13 ... 18	7.5	30.0	30.0	10 97 000 1109	KVSM-M25(D13-18)
M32 x 1.5	15 ... 22	8.5	35.0	35.0	10 97 000 1112	KVSM-M32(D15-22)
M32 x 1.5	18 ... 25	8.0	40.0	40.0	10 97 000 1111	KVSM-M32(D18-25)
M40 x 1.5	18 ... 25	12.0	45.0	45.0	10 97 000 1114	KVSM-M40(18-25)
M40 x 1.5	22 ... 32	12.0	50.0	50.0	10 97 000 1113	KVSM-M40(D22-32)
M50 x 1.5	25 ... 31	12.0	57.0	57.0	10 97 000 1116	KVSM-M50(D25-31)
M50 x 1.5	32 ... 38	12.0	57.0	57.0	10 97 000 1115	KVSM-M50(D32-38)
M63 x 1.5	37 ... 44	12.0	65.0	65.0	10 97 000 1117	KVSM-M63(D37-44)

Technical characteristics

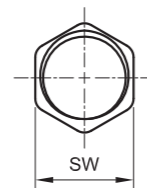
- Material: Brass, nickel plated
- Material(Cable seal): NBR
- Material(O-ring): NBR
- Limiting temperature: -40 ... +120 °C
- Degree of protection(IP): IP68



Thread	Cable range(mm)	Dimension(mm)			Order Information	
PG	ØC	L	SW1	SW2	Part No.	Type Name
PG7	3 ... 6.5	5.8	14.0	14.0	10 97 800 1101	KVSM-PG7(D3-6.5)
PG9	4 ... 8	6.7	17.0	17.0	10 97 800 1103	KVSM-PG9(D4-8)
PG11	5 ... 10	7.0	20.0	20.0	10 97 800 1105	KVSM-PG11(D5-10)
PG13.5	6 ... 12	7.8	22.0	22.0	10 97 800 1107	KVSM-PG13.5(D6-12)
PG16	8 ... 14	7.3	24.0	24.0	10 97 800 1109	KVSM-PG16(8-14)
PG21	13 ... 18	8.0	30.0	30.0	10 97 800 1111	KVSM-PG21(D13-18)
PG29	18 ... 25	9.0	40.0	40.0	10 97 800 1113	KVSM-PG29(D18-25)
PG36	22 ... 32	12.0	50.0	50.0	10 97 800 1115	KVSM-PG36(D22-32)
PG42	32 ... 38	12.0	57.0	57.0	10 97 800 1117	KVSM-PG42(D32-38)
PG48	37 ... 44	12.0	65.0	65.0	10 97 800 1119	KVSM-PG48(D37-44)

Technical characteristics

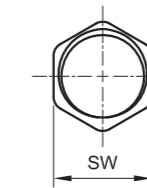
- Material: Brass, nickel plated
- Limiting temperature: -40 ... +120 °C



Thread	Dimension(mm)	Order Information	
Metric	SW	Part No.	Type Name
M12 x 1.5	15.0	10 97 000 1701	KVNM-M12
M16 x 1.5	18.0	10 97 000 1702	KVNM-M16
M20 x 1.5	22.0	10 97 000 1703	KVNM-M20
M25 x 1.5	27.0	10 97 000 1704	KVNM-M25
M32 x 1.5	35.0	10 97 000 1705	KVNM-M32
M40 x 1.5	50.0	10 97 000 1706	KVNM-M40
M50 x 1.5	57.0	10 97 000 1707	KVNM-M50
M63 x 1.5	70.0	10 97 000 1708	KVNM-M63

Technical characteristics

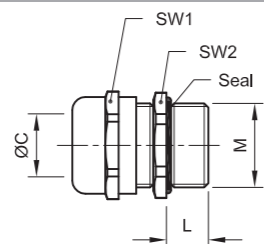
- Material: Brass, nickel plated
- Limiting temperature: -40 ... +120 °C



Thread	Dimension(mm)	Order Information	
PG	SW	Part No.	Type Name
PG7	15.0	10 97 800 1701	KVNM-PG7
PG9	18.0	10 97 800 1702	KVNM-PG9
PG11	21.0	10 97 800 1703	KVNM-PG11
PG13.5	22.0	10 97 800 1704	KVNM-PG13.5
PG16	24.0	10 97 800 1705	KVNM-PG16
PG21	30.0	10 97 800 1706	KVNM-PG21
PG29	40.0	10 97 800 1707	KVNM-PG29
PG36	50.0	10 97 800 1708	KVNM-PG36
PG42	57.0	10 97 800 1709	KVNM-PG42
PG48	65.0	10 97 800 1710	KVNM-PG48

Technical characteristics

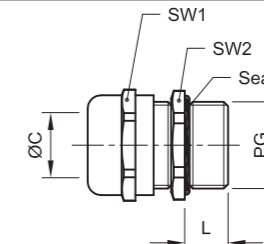
- Material: Brass, nickel plated
- Material(Cable seal): NBR
- Material(O-ring): NBR
- Limiting temperature: -40 ... +120 °C
- Degree of protection(IP): IP68



Thread	Cable range(mm)	Dimension(mm)			Order Information	
		L	SW1	SW2	Part No.	Type Name
Metric	ØC					
M16 x 1.5	4 ... 8	6.0	20.0	20.0	10 97 000 2103	KVEM-M16(D4-8)
M20 x 1.5	6 ... 12	7.0	24.0	24.0	10 97 000 2107	KVEM-M20(D6-12)
M25 x 1.5	10 ... 16	12.0	30.0	30.0	10 97 000 2111	KVEM-M25(D10-16)
M25 x 1.5	13 ... 18	13.0	30.0	30.0	10 97 000 2110	KVEM-M25(D13-18)
M32 x 1.5	15 ... 22	13.0	40.0	40.0	10 97 000 2113	KVEM-M32(D15-22)
M32 x 1.5	18 ... 25	13.0	40.0	40.0	10 97 000 2112	KVEM-M32(D18-25)
M40 x 1.5	22 ... 32	9.0	50.0	50.0	10 97 000 2114	KVEM-M40(D22-32)
M50 x 1.5	32 ... 38	9.0	57.0	57.0	10 97 000 2116	KVEM-M50(D32-38)

Technical characteristics

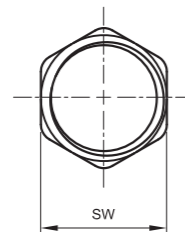
- Material: Brass, nickel plated
- Material(Cable seal): NBR
- Material(O-ring): NBR
- Limiting temperature: -40 ... +120 °C
- Degree of protection(IP): IP68



Thread	Cable range(mm)	Dimension(mm)			Order Information	
		L	SW1	SW2	Part No.	Type Name
PG	ØC					
PG9	4 ... 8	6.0	18.0	18.0	10 97 800 2103	KVEM-PG9(D4-8)
PG11	5 ... 10	6.0	20.0	20.0	10 97 800 2105	KVEM-PG11(D5-10)
PG13.5	6 ... 12	7.0	24.0	24.0	10 97 800 2107	KVEM-PG13.5(D6-12)
PG16	8 ... 14	7.0	24.0	24.0	10 97 800 2109	KVEM-PG16(D8-14)
PG21	13 ... 18	8.0	30.0	30.0	10 97 800 2111	KVEM-PG21(D13-18)
PG29	18 ... 25	8.0	40.0	40.0	10 97 800 2113	KVEM-PG29(D18-25)
PG36	22 ... 32	9.0	50.0	50.0	10 97 800 2115	KVEM-PG36(D22-32)
PG42	32 ... 38	9.0	57.0	57.0	10 97 800 2117	KVEM-PG42(D32-38)

Technical characteristics

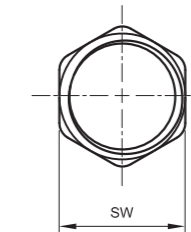
- Material: Brass, nickel plated
- Limiting temperature: -40 ... +120 °C



Thread	Metric	Dimension(mm)	Order Information	
		SW	Part No.	Type Name
M12 x 1.5		15.0	10 97 000 1801	KVNM-M12-E
M16 x 1.5		18.0	10 97 000 1802	KVNM-M16-E
M20 x 1.5		22.0	10 97 000 1803	KVNM-M20-E
M25 x 1.5		27.0	10 97 000 1804	KVNM-M25-E
M32 x 1.5		36.0	10 97 000 1805	KVNM-M32-E
M40 x 1.5		45.0	10 97 000 1806	KVNM-M40-E
M50 x 1.5		55.0	10 97 000 1807	KVNM-M50-E
M63 x 1.5		70.0	10 97 000 1808	KVNM-M63-E

Technical characteristics

- Material: Brass, nickel plated
- Limiting temperature: -40 ... +120 °C



Thread	PG	Dimension(mm)	Order Information	
		SW	Part No.	Type Name
PG7		xxxx	xxxx	KVNM-PG7-E
PG9		xxxx	xxxx	KVNM-PG9-E
PG11		xxxx	xxxx	KVNM-PG11-E
PG13.5		xxxx	xxxx	KVNM-PG13.5-E
PG16		xxxx	xxxx	KVNM-PG16-E
PG21		xxxx	xxxx	KVNM-PG21-E
PG29		xxxx	xxxx	KVNM-PG29-E
PG36		xxxx	xxxx	KVNM-PG36-E
PG42		xxxx	xxxx	KVNM-PG42-E
PG48		xxxx	xxxx	KVNM-PG48-E

Technical characteristics

- Material: Nylon
 - Limiting temperature: -40...+100 °C



Thread	Dimension(mm)	Order Information	
Metric	SW	Black	Light Grey
M12 x 1.5	17.5	10 97 000 1601	10 97 000 2001
M16 x 1.5	22.0	10 97 000 1602	10 97 000 2002
M20 x 1.5	26.4	10 97 000 1604	10 97 000 2004
M25 x 1.5	36.0	10 97 000 1607	10 97 000 2007
M32 x 1.5	38.4	10 97 000 1608	10 97 000 2008
M40 x 1.5	49.5	10 97 000 1609	10 97 000 2009
M50 x 1.5	59.5	10 97 000 1610	10 97 000 2010
M63 x 1.5	72.4	10 97 000 1611	10 97 000 2011

Technical characteristics

- Material: Nylon
 - Limiting temperature: -40...+100 °C



Thread	Dimension(mm)	Order Information	
PG	SW	Black	Light Grey
PG7	17.5	10 97 800 1601	10 97 800 2001
PG9	22.0	10 97 800 1602	10 97 800 2002
PG11	23.5	10 97 800 1603	10 97 800 2003
PG13.5	26.5	10 97 800 1604	10 97 800 2004
PG16	29.5	10 97 800 1605	10 97 800 2005
PG21	35.5	10 97 800 1606	10 97 800 2006
PG29	45.5	10 97 800 1607	10 97 800 2007
PG36	57.5	10 97 800 1608	10 97 800 2008
PG42	64.0	10 97 800 1609	10 97 800 2009
PG48	69.0	10 97 800 1610	10 97 800 2010

Technical characteristics

- Material: Brass, nickel plated
 - Limiting temperature: -40 ... +120 °C



Thread	Dimension(mm)	Order Information	
Metric	SW	Part No.	Type Name
M12 x 1.5	15.0	10 97 000 1701	KVNM-M12
M16 x 1.5	18.0	10 97 000 1702	KVNM-M16
M20 x 1.5	22.0	10 97 000 1703	KVNM-M20
M25 x 1.5	27.0	10 97 000 1704	KVNM-M25
M32 x 1.5	35.0	10 97 000 1705	KVNM-M32
M40 x 1.5	50.0	10 97 000 1706	KVNM-M40
M50 x 1.5	57.0	10 97 000 1707	KVNM-M50
M63 x 1.5	70.0	10 97 000 1708	KVNM-M63

Technical characteristics


- Material: Brass, nickel plated
 - Limiting temperature: -40 ... +120 °C



Thread	Dimension(mm)	Order Information	
PG	SW	Part No.	Type Name
PG7	15.0	10 97 800 1701	KVNM-PG7
PG9	18.0	10 97 800 1702	KVNM-PG9
PG11	21.0	10 97 800 1703	KVNM-PG11
PG13.5	22.0	10 97 800 1704	KVNM-PG13.5
PG16	24.0	10 97 800 1705	KVNM-PG16
PG21	30.0	10 97 800 1706	KVNM-PG21
PG29	40.0	10 97 800 1707	KVNM-PG29
PG36	50.0	10 97 800 1708	KVNM-PG36
PG42	57.0	10 97 800 1709	KVNM-PG42
PG48	65.0	10 97 800 1710	KVNM-PG48

Technical characteristics


- Type: EMC
 - Material: Brass, nickel plated
 - Limiting temperature: -40 ... +120 °C



Thread	Metric	Dimension(mm)		Order Information	
		H	SW	Part No.	Type Name
M12 x 1.5		xxxx	xxxx	10 97 000 1801	KVNM-M12-E
M16 x 1.5		xxxx	xxxx	10 97 000 1802	KVNM-M16-E
M20 x 1.5		xxxx	xxxx	10 97 000 1803	KVNM-M20-E
M25 x 1.5		xxxx	xxxx	10 97 000 1804	KVNM-M25-E
M32 x 1.5		xxxx	xxxx	10 97 000 1805	KVNM-M32-E
M40 x 1.5		xxxx	xxxx	10 97 000 1806	KVNM-M40-E
M50 x 1.5		xxxx	xxxx	10 97 000 1807	KVNM-M50-E
M63 x 1.5		xxxx	xxxx	10 97 000 1808	KVNM-M63-E

Technical characteristics

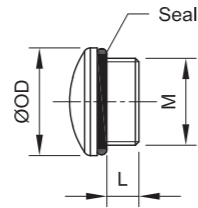
- Type: EMC
 - Material: Brass, nickel plated
 - Limiting temperature: -40 ... +120 °C



Thread	PG	Dimension(mm)	Order Information	
			Part No.	Type Name
PG7		xxxx	xxxx	KVNM-PG7-E
PG9		xxxx	xxxx	KVNM-PG9-E
PG11		xxxx	xxxx	KVNM-PG11-E
PG13.5		xxxx	xxxx	KVNM-PG13.5-E
PG16		xxxx	xxxx	KVNM-PG16-E
PG21		xxxx	xxxx	KVNM-PG21-E
PG29		xxxx	xxxx	KVNM-PG29-E
PG36		xxxx	xxxx	KVNM-PG36-E
PG42		xxxx	xxxx	KVNM-PG42-E
PG48		xxxx	xxxx	KVNM-PG48-E

Technical characteristics

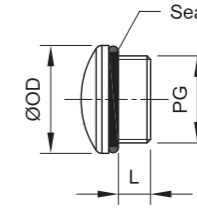
- Material: Nylon
- Material(seal): NBR
- Limiting temperature: -40 ... +100 °C
- Degree of protection(IP): IP68



Thread	Metric	Dimension(mm)		Order Information	
		L	OD	Black	Light Grey
M12		8.5	15.0	10 97 000 4401	10 97 000 4201
M16		8.5	19.0	10 97 000 4402	10 97 000 4202
M18		9.0	22.0	10 97 000 4403	10 97 000 4203
M20		9.0	25.0	10 97 000 4404	10 97 000 4204
M22		10.5	27.0	10 97 000 4405	10 97 000 4205
M25		10.5	30.0	10 97 000 4406	10 97 000 4206
M32		10.5	38.0	10 97 000 4408	10 97 000 4208
M40		11.5	46.0	10 97 000 4409	10 97 000 4209
M50		13.5	56.0	10 97 000 4410	10 97 000 4210
M63		14.0	68.0	10 97 000 4411	10 97 000 4211

Technical characteristics

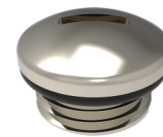
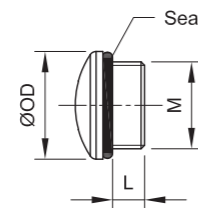
- Material: Nylon
- Material(seal): NBR
- Limiting temperature: -40 ... +100 °C
- Degree of protection(IP): IP68



Thread	PG	Dimension(mm)		Order Information	
		L	OD	Black	Light Grey
PG7		8.5	15.0	10 97 800 4401	10 97 800 4201
PG9		8.5	19.0	10 97 800 4402	10 97 800 4202
PG11		9.0	22.0	10 97 800 4403	10 97 800 4203
PG13.5		9.0	25.0	10 97 800 4404	10 97 800 4204
PG16		10.5	27.0	10 97 800 4405	10 97 800 4205
PG21		8.5	33.0	10 97 800 4406	10 97 800 4206
PG29		11.5	44.0	10 97 800 4407	10 97 800 4207
PG36		13.5	55.0	10 97 800 4408	10 97 800 4208
PG42		13.5	62.0	10 97 800 4409	10 97 800 4209
PG48		14.5	68.0	10 97 800 4410	10 97 800 4210

Technical characteristics

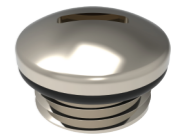
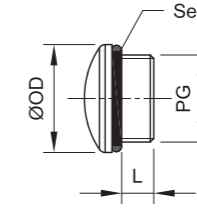
- Material: Brass, nickel plated
- Material(seal): NBR
- Limiting temperature: -40 ... +120 °C
- Degree of protection(IP): IP68



Thread	Metric	Dimension		Order Information	
		L	OD	Part No.	Type Name
M12		5.0	14.0	10970004301	KVCM-M12-Y
M16		6.0	18.5	10970004302	KVCM-M16-Y
M18		7.0	20.0	10970004303	KVCM-M18-Y
M20		7.0	22.0	10970004304	KVCM-M20-Y
M22		7.0	25.0	10970004305	KVCM-M22-Y
M25		7.0	27.0	10970004306	KVCM-M25-Y
M32		8.0	35.0	10970004307	KVCM-M32-Y
M40		9.0	43.0	10970004308	KVCM-M40-Y
M50		9.0	53.0	10970004309	KVCM-M50-Y
M63		10.0	66.0	10970004310	KVCM-M63-Y

Technical characteristics

- Material: Brass, nickel plated
- Material(seal): NBR
- Limiting temperature: -40 ... +120 °C
- Degree of protection(IP): IP68



Thread	PG	Dimension		Order Information	
		L	OD	Part No.	Type Name
PG7		5.0	14.0	10 97 800 4301	KVCM-PG7-Y
PG9		6.0	18.0	10 97 800 4302	KVCM-PG9-Y
PG11		6.0	21.0	10 97 800 4303	KVCM-PG11-Y
PG13.5		7.0	23.0	10 97 800 4304	KVCM-PG13.5-Y
PG16		7.0	24.0	10 97 800 4305	KVCM-PG16-Y
PG21		7.0	32.0	10 97 800 4306	KVCM-PG21-Y
PG29		8.0	40.0	10 97 800 4307	KVCM-PG29-Y
PG36		9.0	50.0	10 97 800 4308	KVCM-PG36-Y
PG42		9.0	59.0	10 97 800 4309	KVCM-PG42-Y
PG48		10.0	64.0	10 97 800 4310	KVCM-PG48-Y